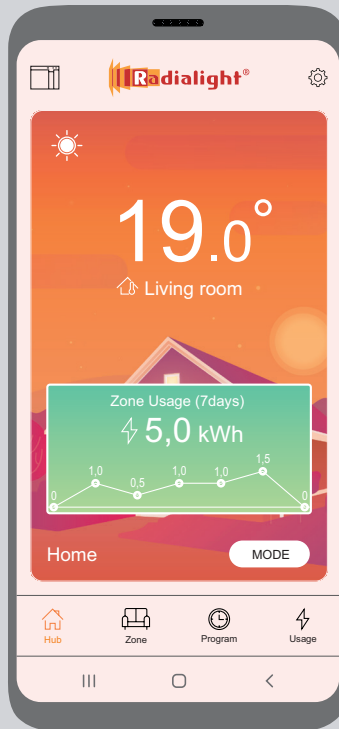




Wi-Fi APP



Quick Start Guide

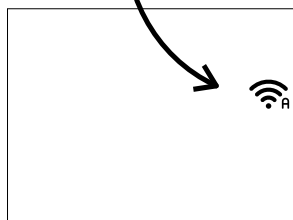
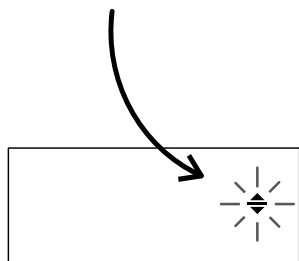
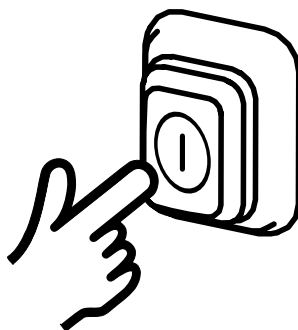
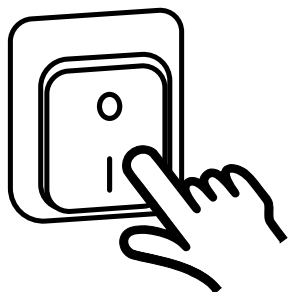
android

(version 7.0 or later)



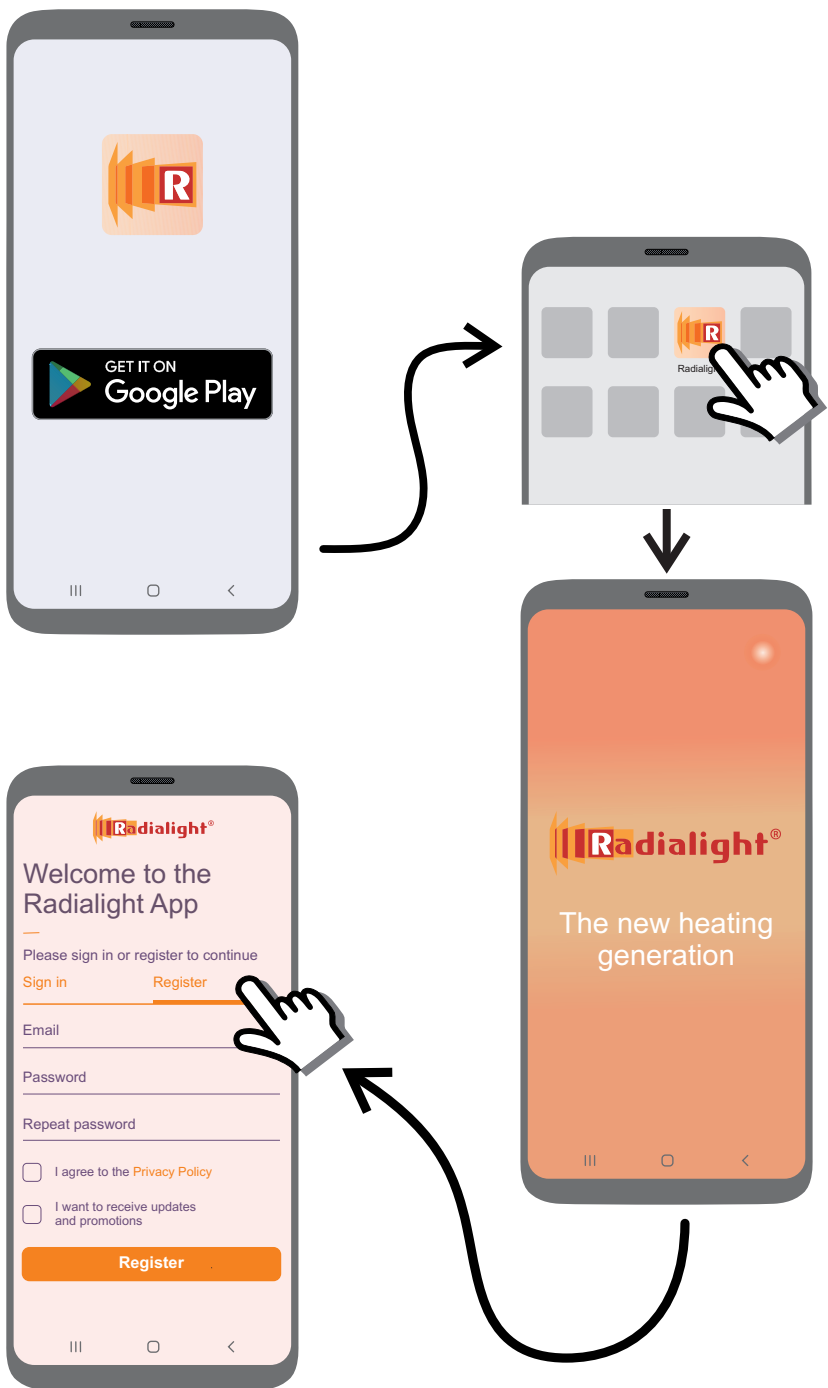
Klima / Icon

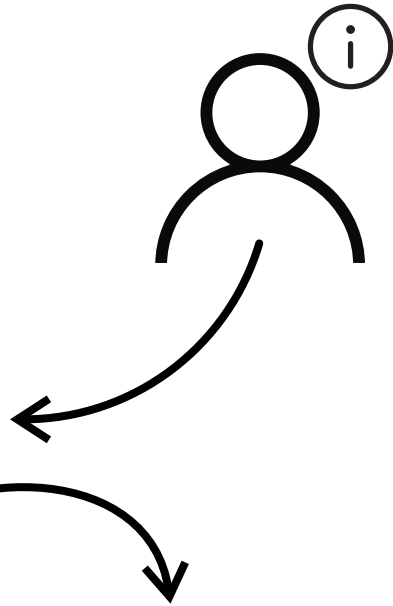
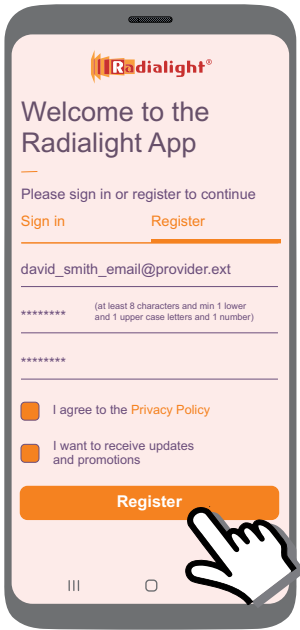
Kyoto / Aetherea



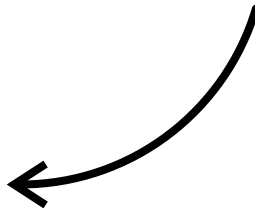
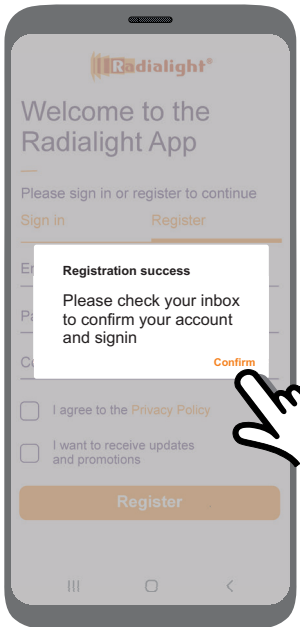
Wi-Fi 2,4GHz IEEE 802.11 b/g/n
WEP/WPA/WPA2

~~Wi-Fi 5,0GHz~~

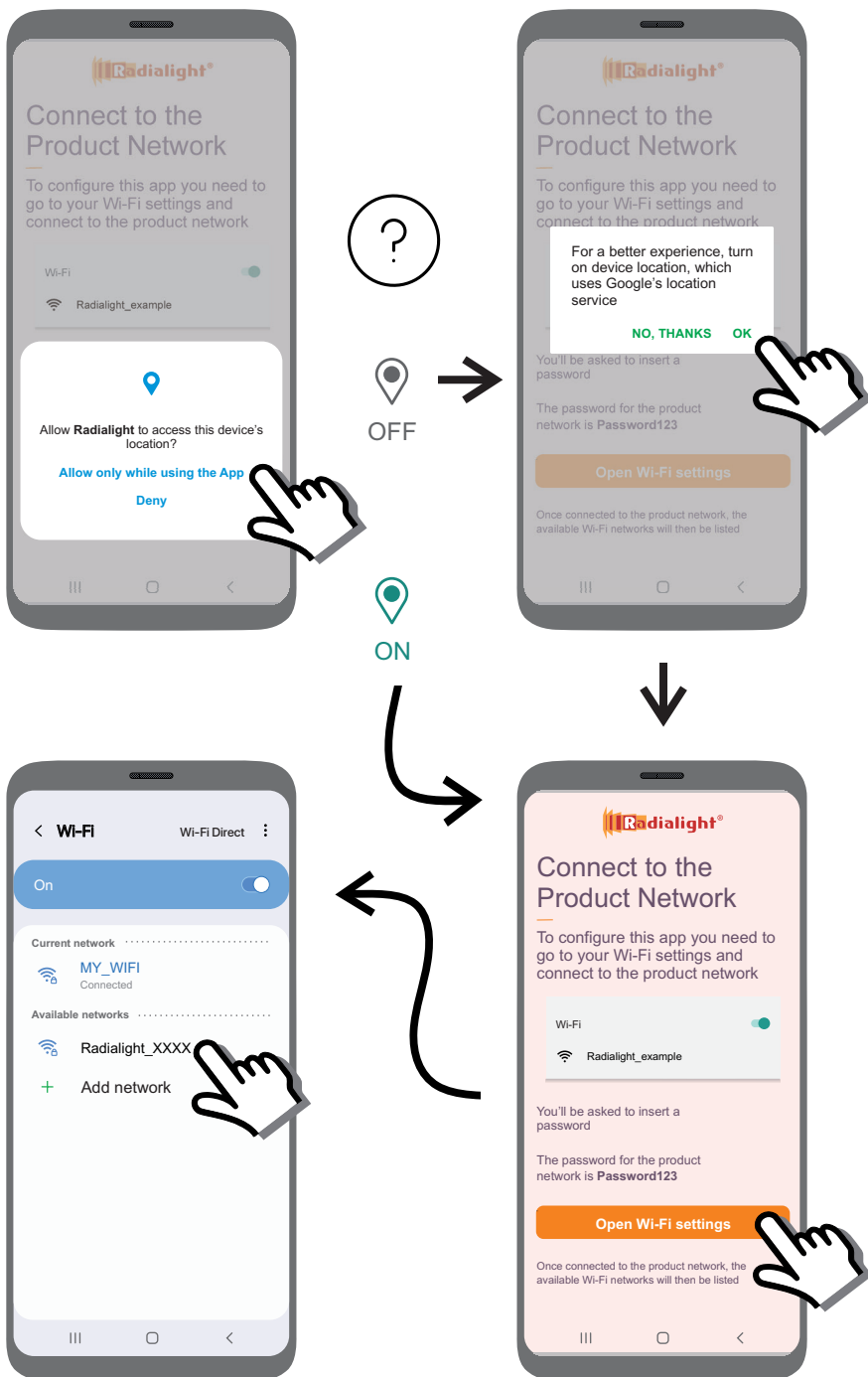


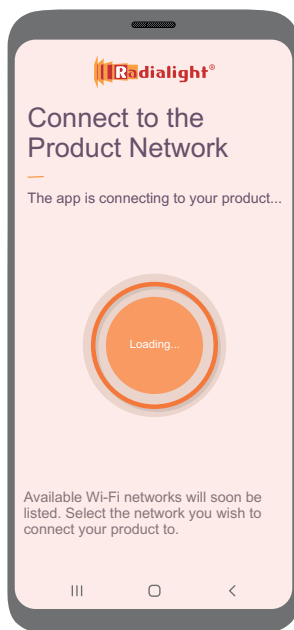
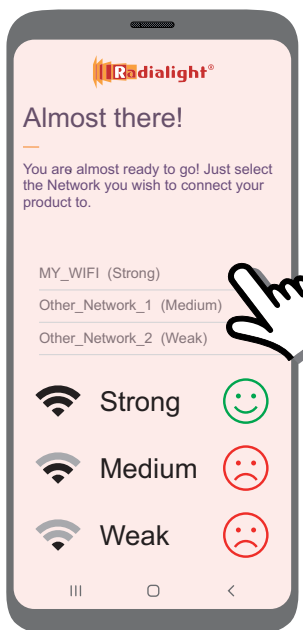
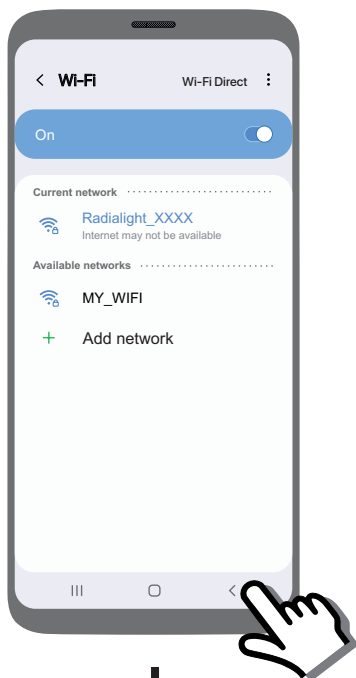
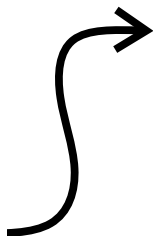
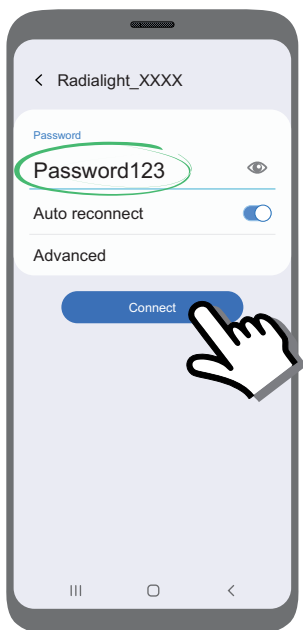


Check your e-mail and click the
confirmation link.
Then press Confirm and sign-in

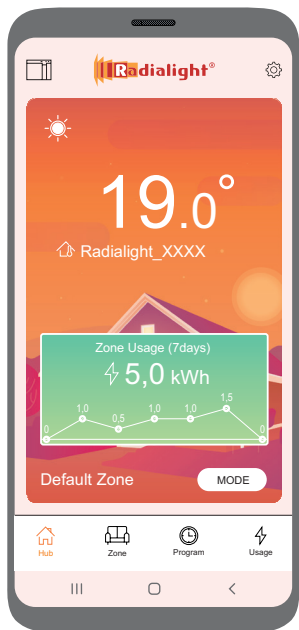
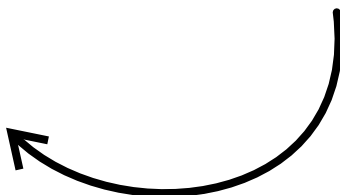
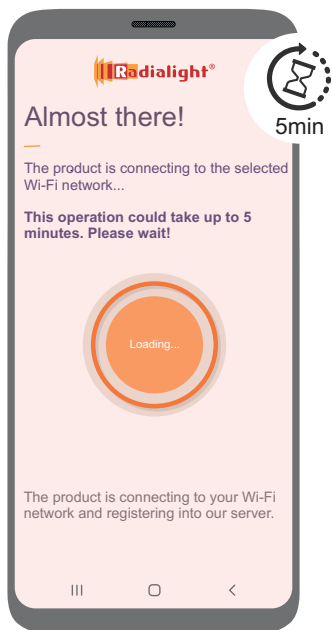
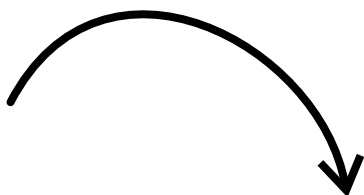
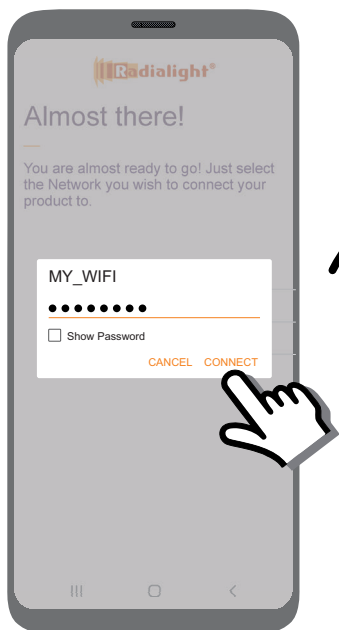


Missing email?
Have you checked
your SPAM folder?



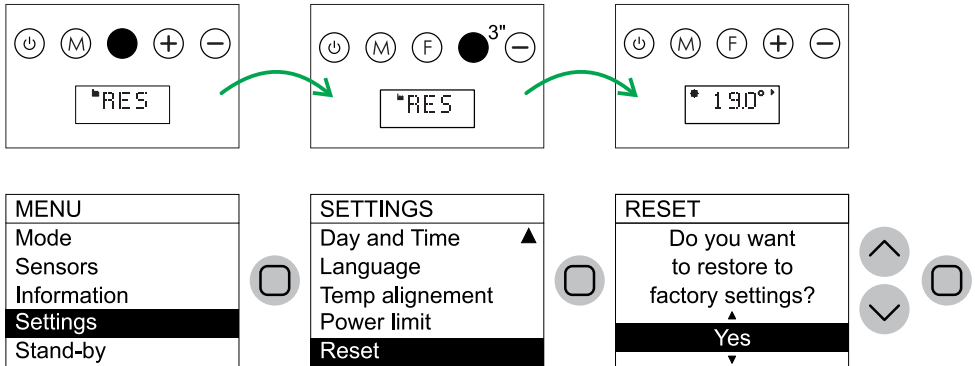


Wi-Fi name and password:
Max 30 characters not including the comma ",", the equal sign "=" or the question mark "?"

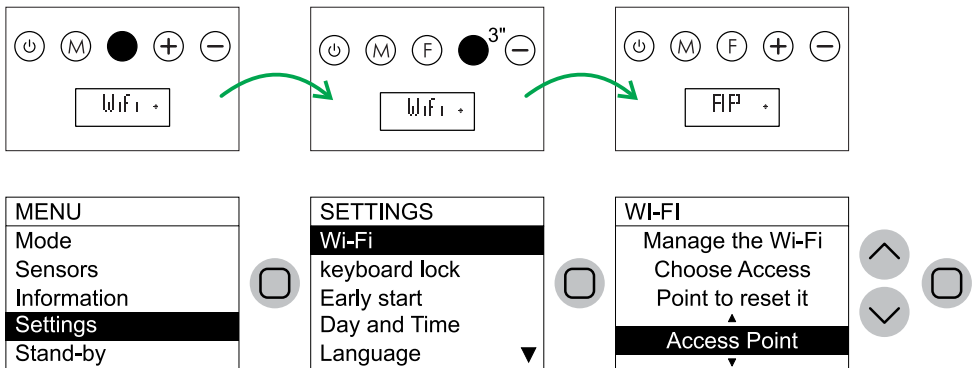


UNABLE TO REGISTER YOUR PRODUCT? Try this:

1 - Reset the heater (depending on the model)



2 - Set the Wi-Fi to Access Point mode (depending on the model)



3 - Turn OFF the heater with the switch on the right side

4 - Close the App

5 - Open the App

6 - Switch ON the heater and wait 30"

7 - Try again to add the product



www.radialight.com/app-support

ISAPP001_R4